

RMS Level Logger Tutorial

Using the Software

Start "Surmenu" from the Programs screen. Select or enter a Job No. Usually something like 2006/023 perhaps the 23rd Job of 2006.

Click "OK" then "Level Logger" on the next screen.



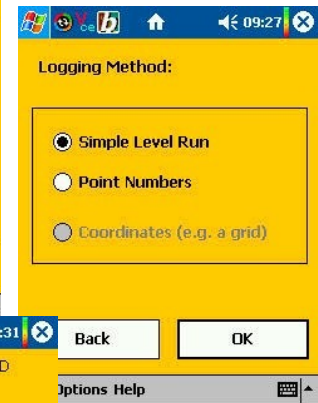
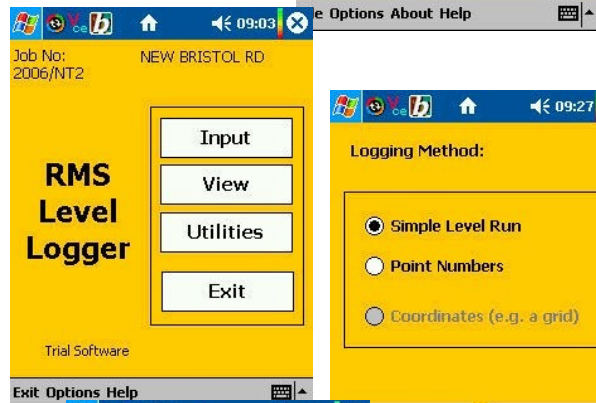
Level Logger

On the main RMS Level Logger screen click on "Input".

Select the Logging Method, you may wish to number some points.

Click "OK" which brings up the file selection screen. Normally you will accept the default offering, but it is possible to add data to an existing file which you can select using the "Browse" button. It is also possible to edit the file name in the text box.

Enter Surveyor's name & a brief File Description (e.g. Control) on the next two screens.



Opening Reading

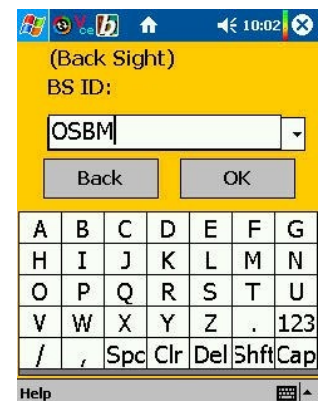
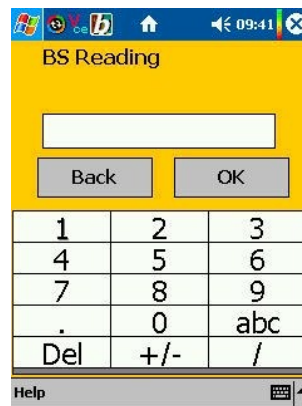
Enter the Back Sight reading to the first point in the next screen.

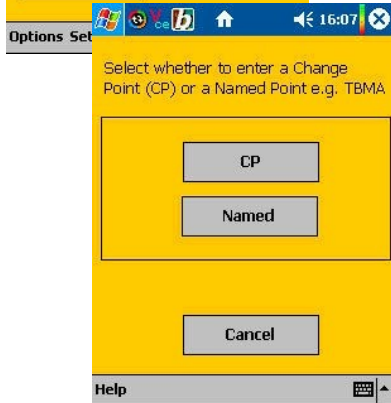
Click "OK" then enter a name for the opening Back Sight.

Note:

If you have control data already entered into the control file these points are available in the drop down list.

A level value is then requested for this opening point. If you don't have one, simply accept the default value of 100.00.





| BS | IS | FS | ID | Lvl |
|-------|-------|-------|-------|--------|
| 1.000 | | | OSBM | 54.125 |
| 1.789 | | 2.125 | CP | 53.000 |
| 3.080 | | 1.452 | CP | 53.337 |
| 1.711 | | 2.096 | CP | 54.321 |
| 0.960 | | 1.888 | CP | 54.144 |
| | 1.560 | | A | 53.544 |
| | | 2.140 | OSBM2 | 52.964 |

OK

About ReCompute Help

Data Input

Observations are then entered via a series of menu screens. Select "FS", then enter the foresight staff reading.

The next menu offers either a simple Change Point (CP) or a Named point such as a control station or TBM.

Click on "CP", which displays the Back Sight menu.

Continue by entering a Back Sight reading & it returns to the Fore Sight menu.

Run through some more readings, and try using the Intermediate Sight (IS) option.

Now try clicking the "View" button to display the data entered so far. Note that level values are being computed "live" based on the value you entered earlier.

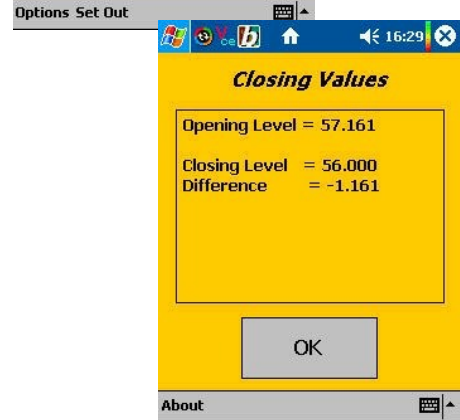
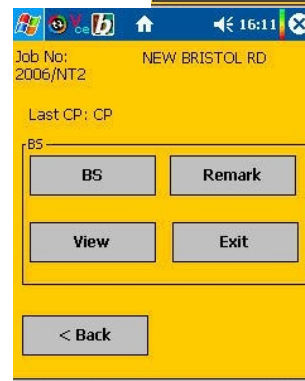
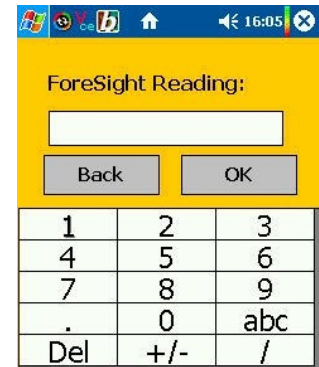
If you have a value for the opening reference then click ReCompute & enter the value.

When the level run is complete, click "Exit" on the Back Sight menu. Closing values are displayed.

Other Options

You may review & recompute a file using the "View" button on the main Level Logger screen.

"Level Utilities" gives the option of saving a file in a printable format, or comma delimited for further processing in a spreadsheet.



Setting a point at a specific height

This is a very useful option if you need to mark a point at a specific height. Click the SetOut menu option when in the Foresight screen, & select "Mark a Specified Level Point".

In the next screen enter the level value you require. It displays the current Collimation Level to help you judge whether it is practical.

This produces a screen displaying the required staff reading. i.e. View the staff through the level, & slide it up or down until you see the required reading.

